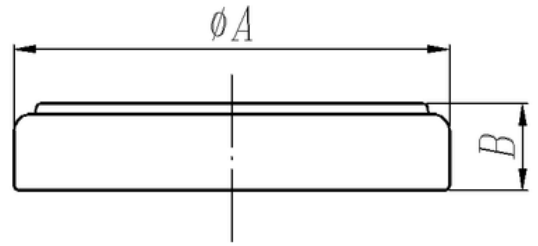


# Li-Mn BUTTON CELL

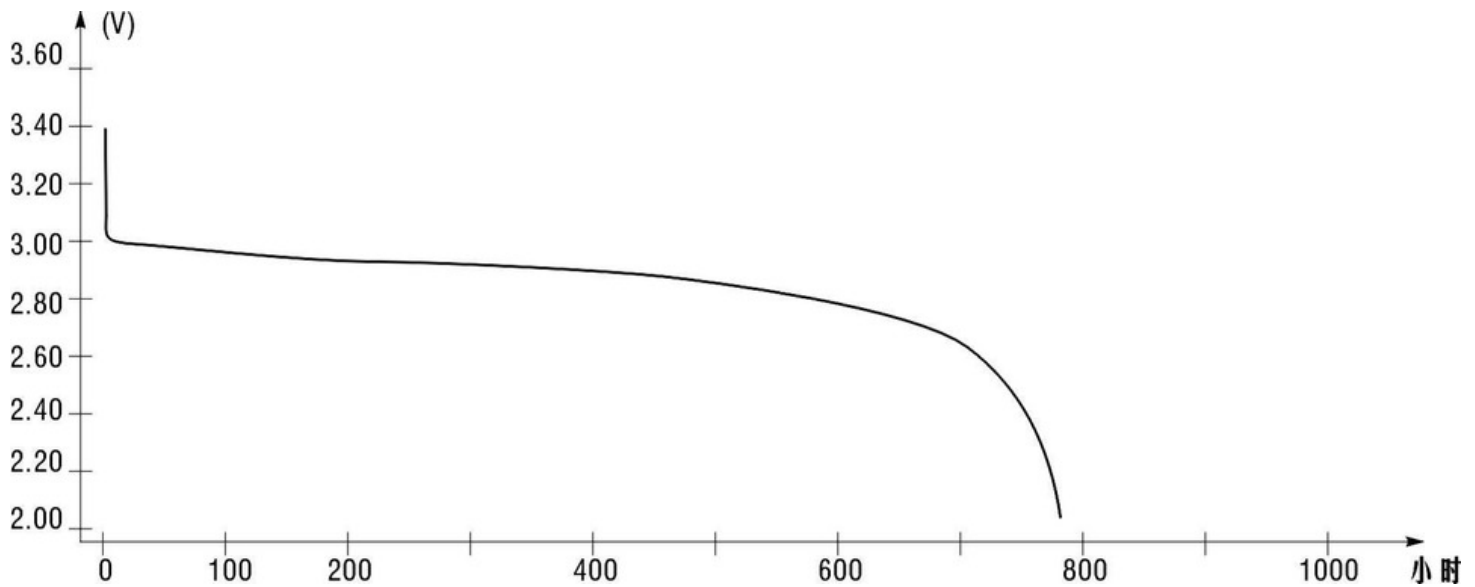


**Dimensions(GB):**

A: 20.0(-0.3)mm    B: 2.5(-0.3)mm

Size: CR2025, 3V

Dimensions(GB)



## PHYSICAL CHARACTERISTICS

- Nominal capacity: 150mAh(Continuous Discharging Under 15kΩ load to 2.0V End-Voltage at 20°C)
- Typical weight 2.5g
- Operating temperature range -20°C~70°C

## CERTIFICATES

- CE
- IEC60086
- RoHS
- MSDS
- Air Transportation Certificate
- Sea Transportation Certificate