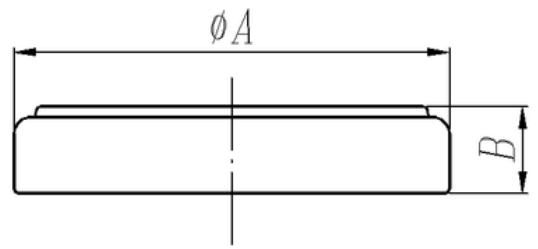


Li-Mn BUTTON CELL

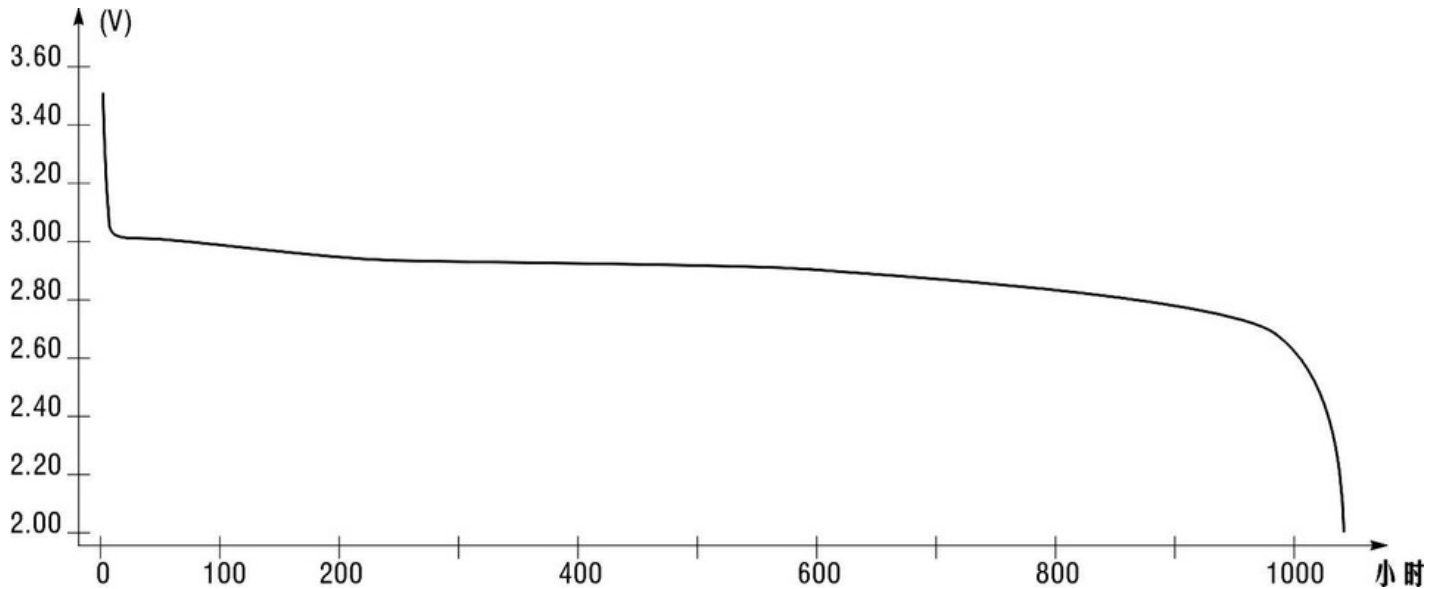


Dimensions(GB):

A: 20.0(-0.3)mm B: 3.2(-0.3)mm

Size: CR2032, 3V

Dimensions(GB)



PHYSICAL CHARACTERISTICS

- Nominal capacity: 210mAh(Continuous Discharging Under 15kΩ load to 2.0V End-Voltage at 20°C)
- Typical weight 2.8g
- Operating temperature range -20°C~70°C

CERTIFICATES

- CE
- IEC60086
- RoHS
- MSDS
- Air Transportation Certificate
- Sea Transportation Certificate